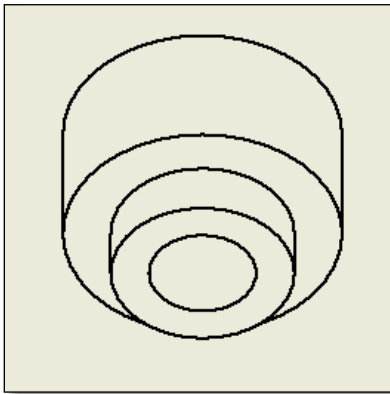


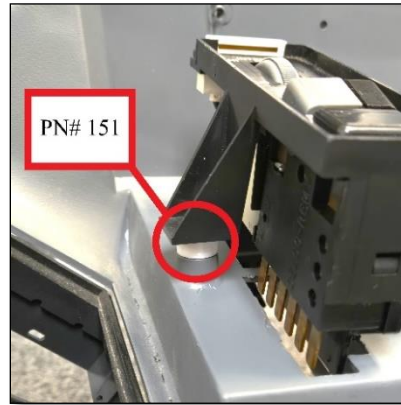
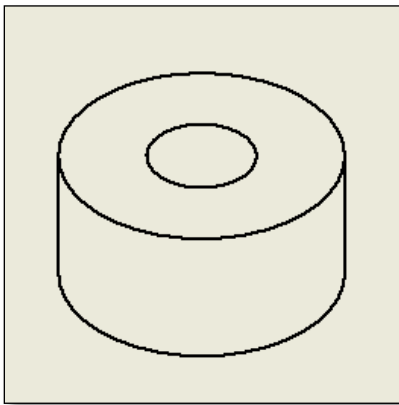
1985-91 Pontiac Firebird Installation

Kit includes: PN# 150 (qty 2), PN# 151 (qty 1), PN# 11917 (qty 4), PN# 10181 (qty 13)

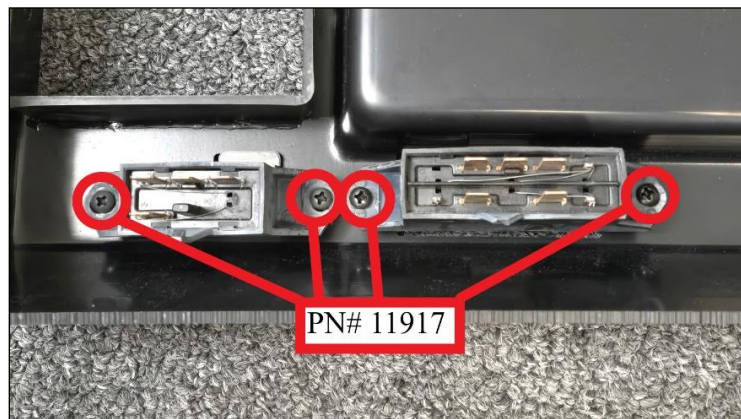
- Place spacer part number **#150 (qty 2)** on right side of the light switch where the screws mount.



- Place spacer part number **#151 (qty 1)** on left side of the light switch where the screw mounts.



- Place light switch on top of the spacers and install part number **#10181 (qty 3)**. Do not overtighten!
- Use part number **#11917 (qty 4)** to mount the defroster and trunk switches to the dash panel.



- Use the remaining part number **#10181 (qty 10)** to connect the new dash panel to your dash carrier.